

## Rigel HV PRO Portable Yellow Laser Module

### Laserglow Part Number: GRV050XXX



This model is listed as **inactive** in our product database. Stock may be limited, and availability is subject to change without notice.

#### Similar Products:

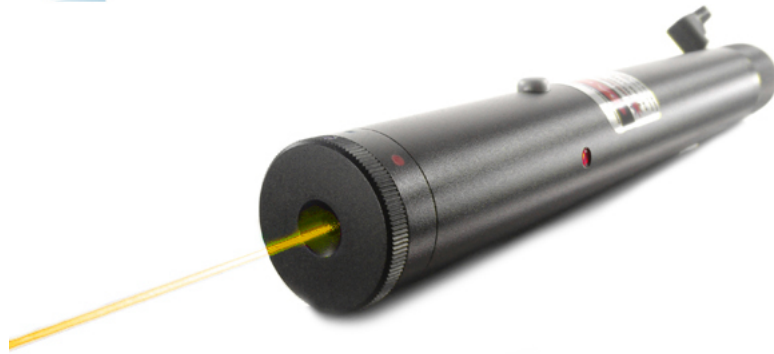
For information about the other lasers in this product family visit:

<http://www.laserglow.com/GRV>

#### Ordering:

Order Online Now or Request Quote:

<http://www.laserglow.com/GRV050XXX>



#### Series Specifications:

Nominal Wavelength	589 nm
Output Type	CW
Laser Source Type	DPSS

#### Overview:

The new 589 nm bright yellow laser from Laserglow is noticeably brighter and more "yellow" than the original 593.5 nm Rigel/Vega series yellow lasers. (The 593.5 lasers are often described as "amber-yellow".) This wavelength is closer to the middle of the spectrum, making it brighter to the human eye and more suitable for applications requiring high visibility, long range operation, etc. This is really the brightest and "yellowest" portable yellow laser on the market!

#### Key Features:

- **Starting at: \$489**
- **Output Power:** 0.6 mW - 20 mW, varies based on model
- **Expected Life:** 3000-5000 hours
- **Wavelength:** 589 nm (bright yellow)
- **Key Feature:** The brightest and most visible yellow laser on the market!
- **Casing:** Machined Aluminum
- **Package Includes:** Portable laser, aluminum carrying case, instructions/warranty.
- **Safety Info:** Class IIIa/IIIb
- **Duty Cycle:** 30 sec. on/15 sec. off

**U.S. Orders:** Class IIIb versions of this laser cannot be shipped to the United States. If you live in the USA please choose a Class IIIa model, or consider the [589 nm laboratory laser](#) which provides similar output but is not portable. [Click here for more information.](#)

**Canadian Orders:** Class IIIb version of this laser can be shipped within Canada to Canadian companies who provide the following documentation:

- A valid LSO Certificate with a certified Laser Safety Officer on the premises
- A company purchase order
- A signed Declaration of Use. Please contact our sales department for this form

## Specifications:

This spec sheet has been generated specifically for part number GRV050XXX, per your request, and data for the entire series is also displayed for your reference. The specs which are specific to GRV050XXX have been highlighted below in **red + bold**.

Output Power (mW)	>10, <b>&gt;50</b>
Central Wavelength (nm)	<b>588.6</b>
Divergence (mrad, full angle)	<b>&lt;1.5</b>
Beam Dimensions (mm, 1/e <sup>2</sup> )	<b>1.5</b>
Operating Temperature Range (°C)	<b>15 to 35</b>
Total Power Consumption (W)	3, <b>8</b>
Max. Power Input Duty Cycle	<b>30 sec. on/15 sec. off</b>
Standard Warranty (months)	<b>6</b>
MTTF (operational hours)	<b>5000</b>
Weight of Product or Laser Head (kg)	<b>0.18</b>
Dimensions of Product or Laser Head (mm)	<b>199 (l) x 23 (d)</b>
Power Supply	<b>1 x CR123A Battery</b>

CW: All specifications are based on performance at full output power and after the specified warmup period. Output characteristics may change if the laser is run at a different power level.

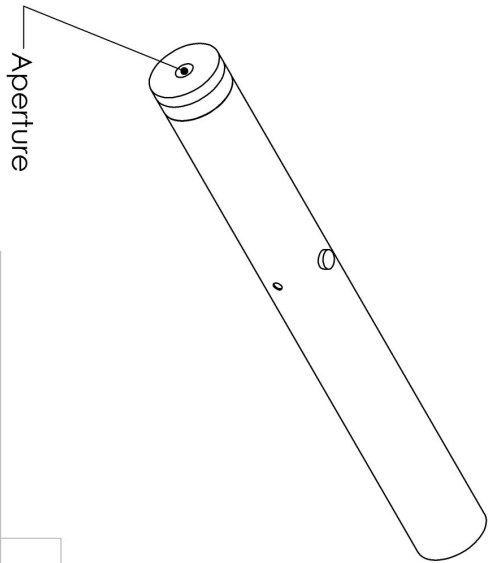
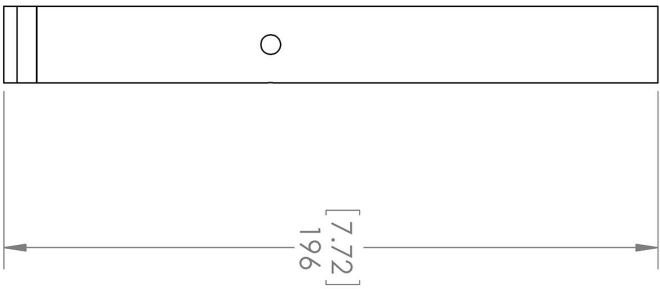
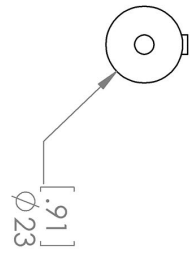
Q-Switched: Specifications are based on the laser pulsing at the specified design frequency. Output characteristics may change if the laser is run at a different frequency.

## Regulatory Classification:

The model you have selected (GRV050XXX) requires the following safety label(s):



**Dimensional Drawing - Laser Form Factor: GAQ:**





UNLESS OTHERWISE SPECIFIED:  
 DIMENSIONS ARE IN MM(INCH)  
 TOLERANCES: +/- 0.75 MM

THE INFORMATION CONTAINED IN THIS DRAWING IS THE SOLE PROPERTY OF LASERGLOW TECHNOLOGIES. ANY REPRODUCTION IN PART OR AS A WHOLE WITHOUT THE WRITTEN PERMISSION OF LASERGLOW TECHNOLOGIES IS PROHIBITED. © 2012 LASERGLOW.COM LIMITED. ALL RIGHTS RESERVED

<p><b>Laserglow Technologies</b></p>	
<p>TITLE:  <b>Hydra Pro / Aquarius Pro /                  Electra Pro / Rigel-HV Pro</b></p>	
<p>REV  <b>1</b></p>	
<p>SCALE: 1:2</p>	<p>SHEET 1 OF 1</p>

**Accessories:**

The most popular accessories for model GRV050XXX are shown below. For additional details regarding these or other accessories please see our website or contact us directly.

Part Number	Description	
 AGF59459X	Optical Density 6 Fit over prescription glasses Protect your vision when working with Class IIIb and Class IV green lasers. Full Details: <a href="http://www.laserglow.com/AGF">www.laserglow.com/AGF</a>	
 ACAGAQPXX	Carrying Case-6 AquariusPro/ElectraPro/Rigel HVPro/HydraPro Full Details: <a href="http://www.laserglow.com/ACA">www.laserglow.com/ACA</a>	Included With Laser

**FOR MORE INFORMATION PLEASE CONTACT:**

LASERGLOW TECHNOLOGIES  
99 Ingram Dr. Unit B, North York, ON, Canada M6M2L7  
Tel. (416) 729-7976 Fax (716) 322-3510  
[sales@laserglow.com](mailto:sales@laserglow.com) [www.laserglow.com](http://www.laserglow.com)

E&OE: Data included in this sheet may be subject to change without notice.  
Please confirm critical specifications with our staff prior to ordering.